

Utilities / Site Overview



UTILITIES

1. Museum Ave.
2. Main St.
3. St. Andrews

SITE

1. Wiregrass Innovation Center
2. City Hall/Annex



Utilities – Museum Ave.



SCOPE

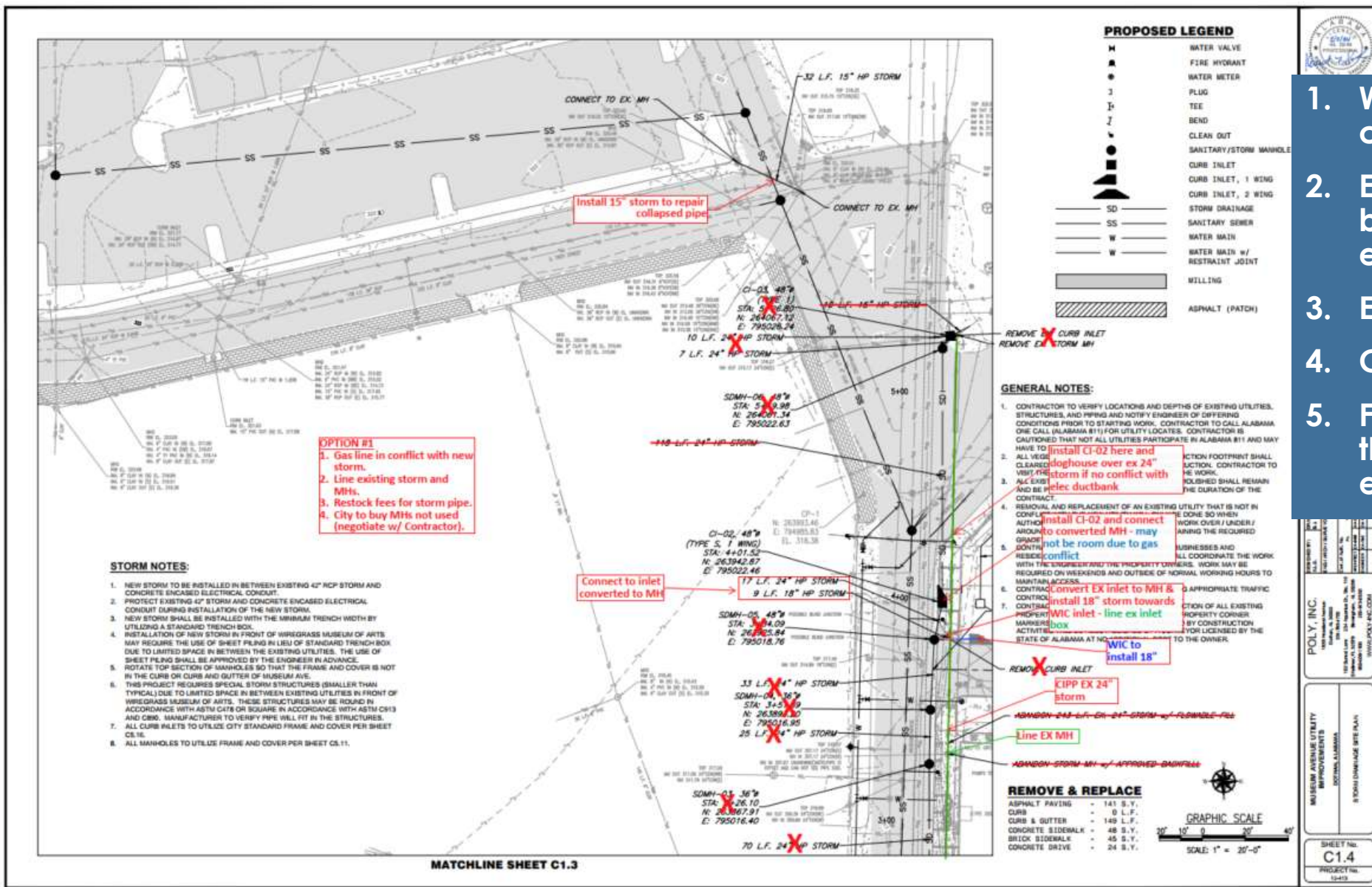
1. Storm replace
2. Water replace
3. Sewer replace
4. Patching

ISSUES

1. Limited room to work
2. Existing electrical ductbank (concrete encased)
3. Vibration concerns at WMA
4. Existing natural gas line (shallow)
5. Existing 24" storm underneath electrical ductbank
6. Existing 42" storm (center)
7. Other unknown utilities, unknown elevations, etc.
8. Some of oldest utilities in Dothan so existing mapping not as defined



Utilities – Museum Ave.



1. Worked w/ Owner as conflicts arose
2. Existing gas line was not bored quite as deep as expected
3. Existing 42" storm alignment
4. Concrete encased ductbank
5. Final result was to truncate the new storm pipe tie to existing

POLY, INC.
 1000 N. GARDNER AVE.
 DOTHAN, ALABAMA 36024
 (205) 329-1111
 FAX: (205) 329-1112
 WWW.POLY-INC.COM

MUSEUM AVENUE UTILITY IMPROVEMENTS
 DOTHAN, ALABAMA
 STORM DRAINAGE SHEET PLAN

SHEET NO. **C1.4**
 PROJECT NO. 13-113



Utilities – Museum Ave.

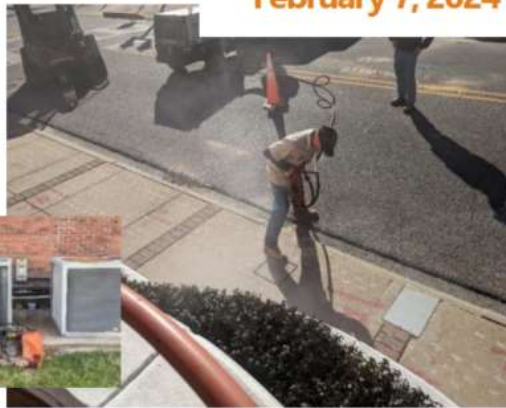
Vibration Testing at This Site



December 13, 2023



February 7, 2024



1. Vibration consultant
2. Goal is to protect artwork in WMA building
3. Tested equipment to establish baseline
4. Established requirements for construction contract
5. Sensors monitored during construction
6. Alerts to construction team and Owner when certain vibration levels were reached
7. Consequences for contractor



Utilities – Museum Ave.



Before Construction



Utilities – Museum Ave.

During Construction



Utilities – Museum Ave.

Construction Complete



Utilities – Main St.

Dothan Downtown



UTILITIES

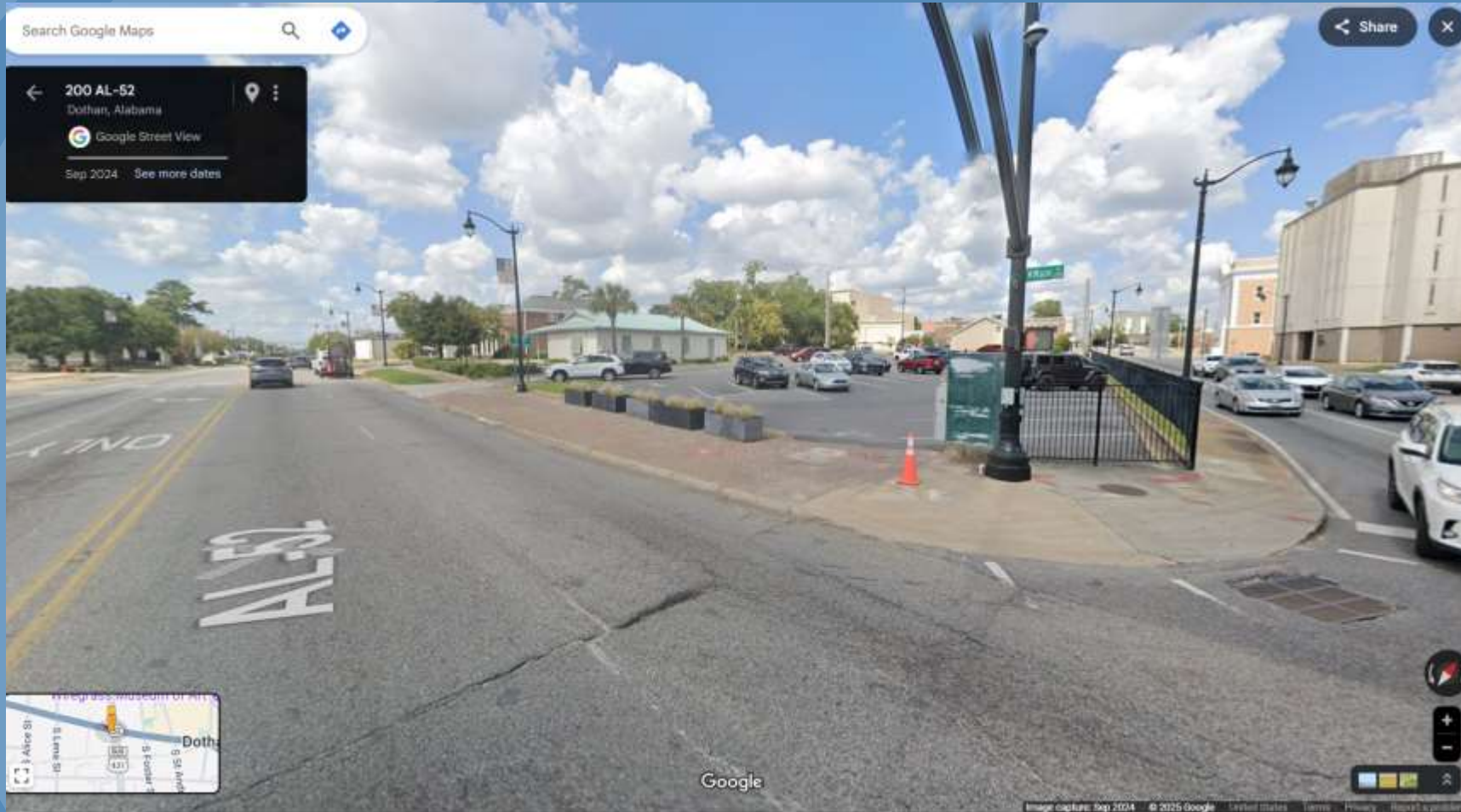
1. Storm add/replace
2. Sewer line/replace
3. Trunk line rehab
4. Troy/Main water loop

ALDOT RESURFACING

1. Main St. to through downtown Dothan to be resurfaced in fall 2025
2. Storm and sewer work being completed in advance of planned resurfacing



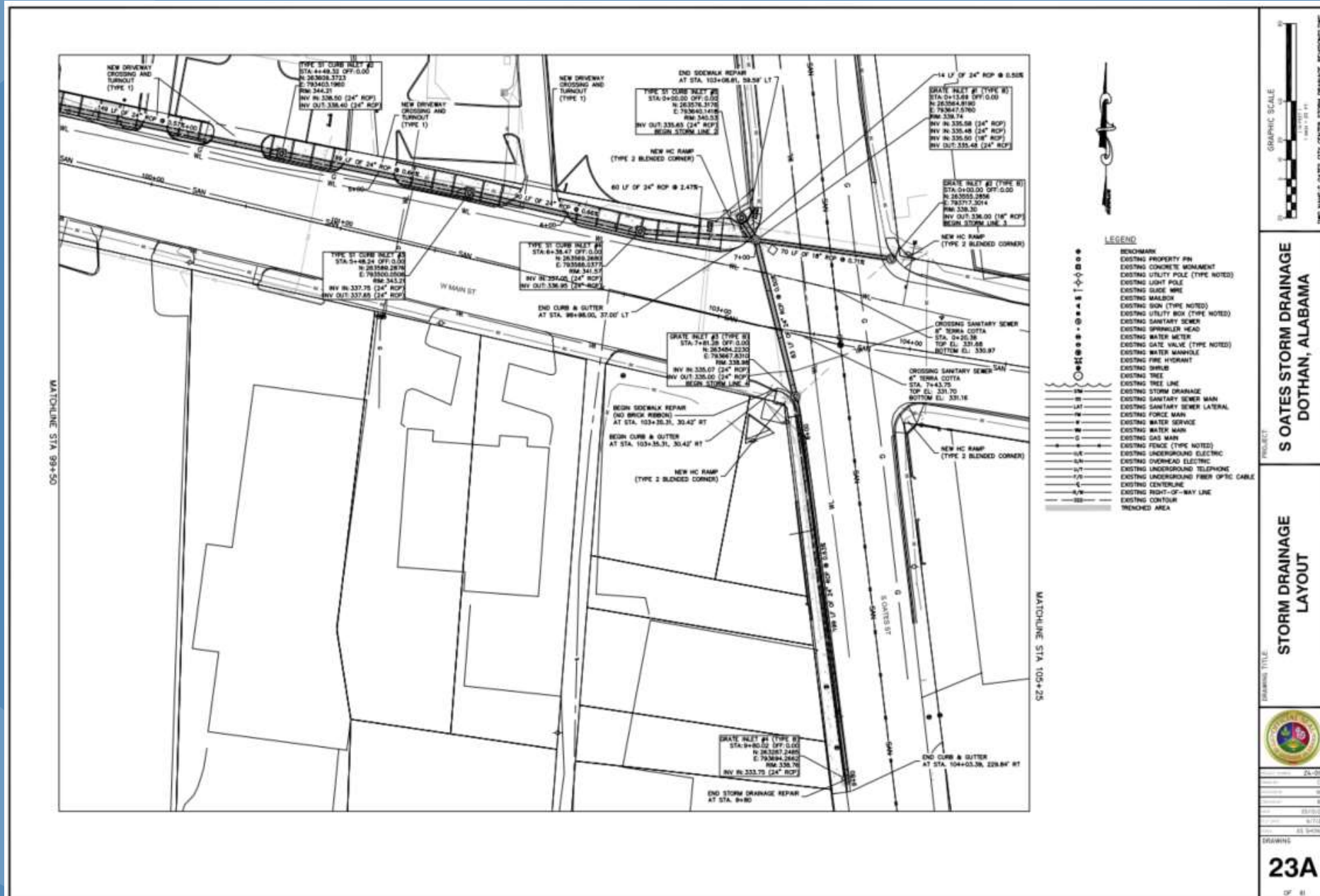
Utilities – Main St. (Storm)



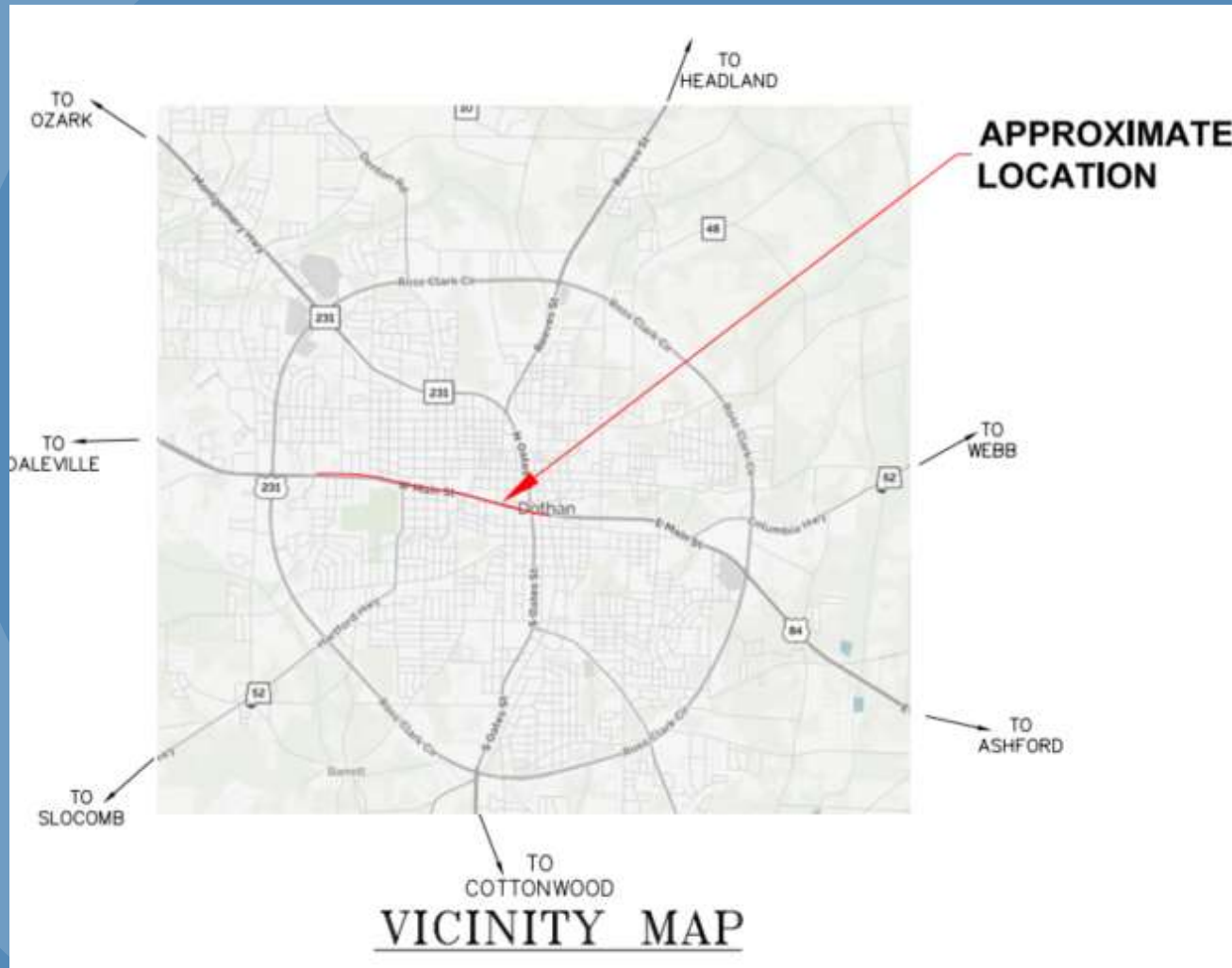
1. Water ponds at NW corner of intersection
2. Add to storm infrastructure along Main
3. Add to storm infrastructure along Oates
4. Improve drainage and safety



Utilities – Main St. (Storm)



Utilities – Main St. (Sewer)



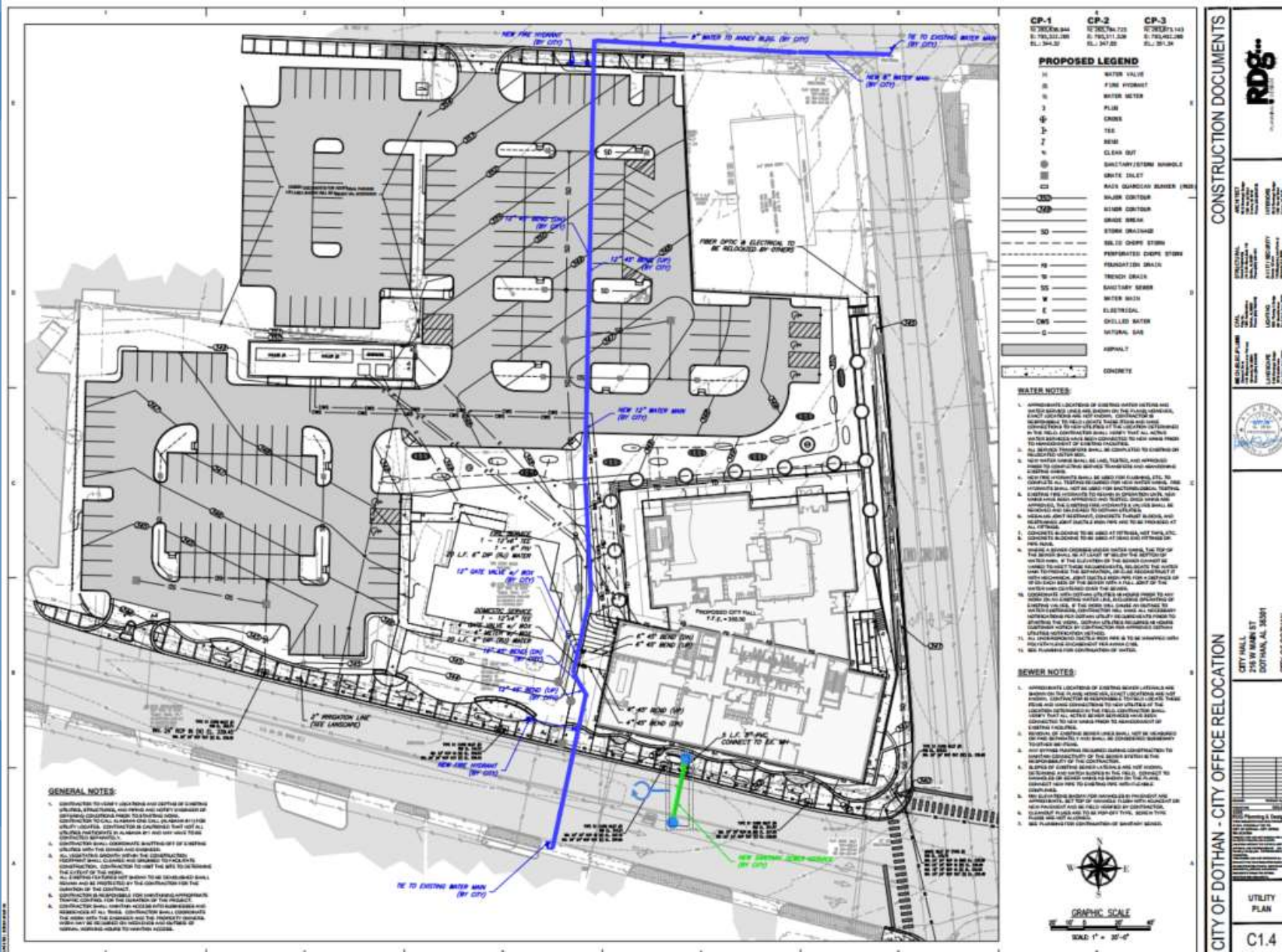
1. Rehab or replace aging sewer from Jamestown Blvd. to Foster St.
2. Work completed at night due to heavy traffic



Utilities – Main St. (Sewer)



Utilities – Main St. (Water)



1. New 12" DIP connection from Main to Troy
2. Improve pressure/flow
3. Water/fire service to new City Hall and Annex



Utilities / St. Andrews



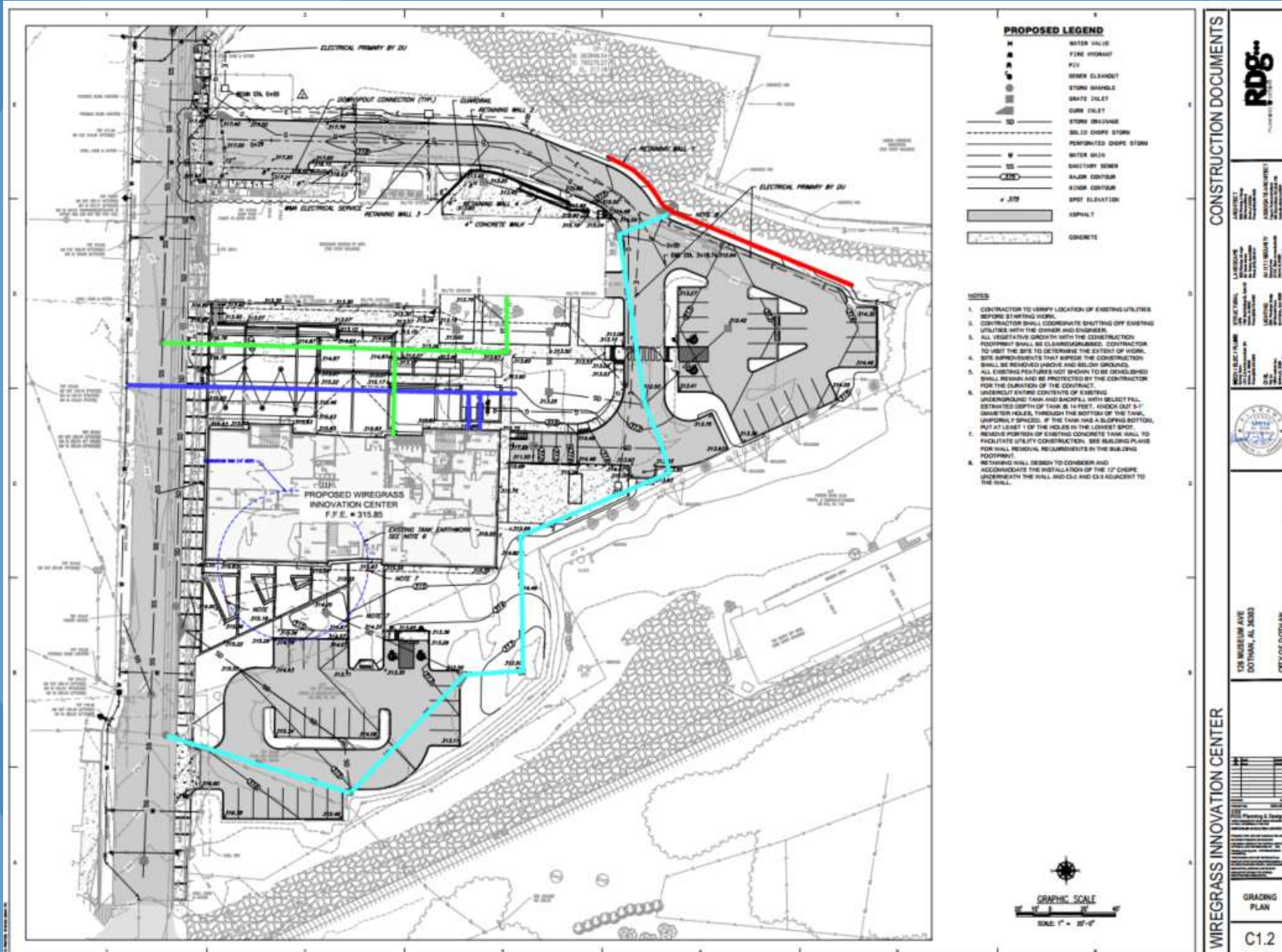
- UTILITIES**
1. Replace or line 12" water line
 2. One of oldest water lines in downtown
 3. Rehab/replace while area is or will be disturbed for ongoing and future construction



Site – WIC



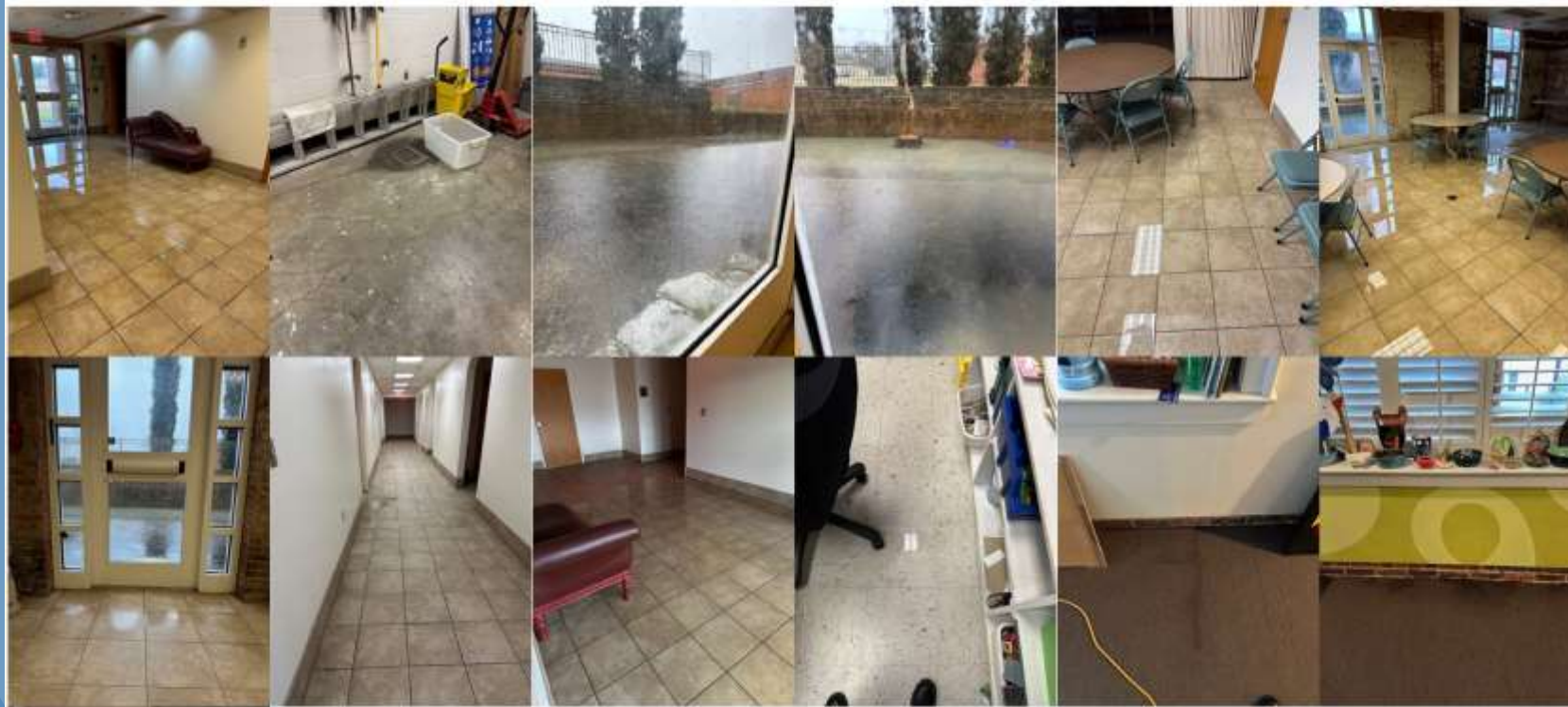
Site - WIC



1. Water/sewer connections to Museum Ave. dependent on Museum Ave. project
2. Sewer to WMA ran through WIC building footprint
3. Wall needed on north side due to proximity to existing business
4. WMA is old site for Dothan Utilities years ago
5. Underground tank in building footprint was undercut and backfilled with engineered fill
6. Coordinated footings and utilities through and around the tank walls
7. Improve drainage around WMA
8. Storm outfall
9. Vibration control



Site - WIC



DRAINAGE ISSUES

1. Improve drainage around the building
2. Positive grading from the building
3. New area inlets on north side of building
4. New foundation drain
5. Connect existing foundation drain to new drainage system



Site - WIC



DRAINAGE OUTFALL

1. UG spring flowing from Civic Center inlet through the project site
2. Bypass pumping required to work in the dry
3. Large structure required in Museum Ave to connect 42" storm to new 54" storm



Site - WIC



DRAINAGE OUTFALL

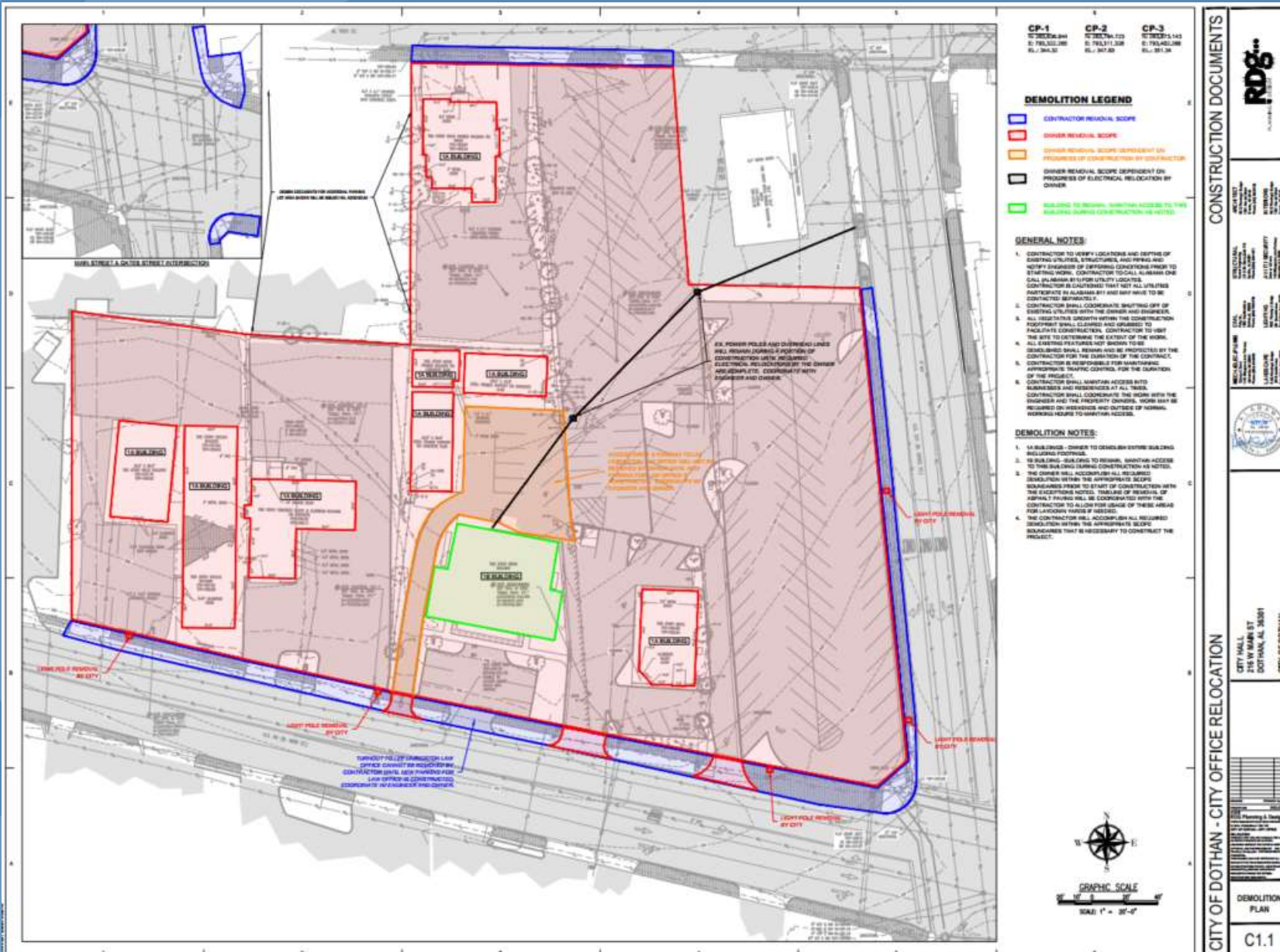
1. Buried outfall structure connected to 6'x6' tunnel
2. Survey data not available
3. City CCTV and inspected by walking in from the downstream end
4. Contractor had to expose and engineer a solution
5. Limited space to work due to proximity to property line
6. CIP box w/ box culvert stubbed out to connect to existing tunnel



Site – City Hall



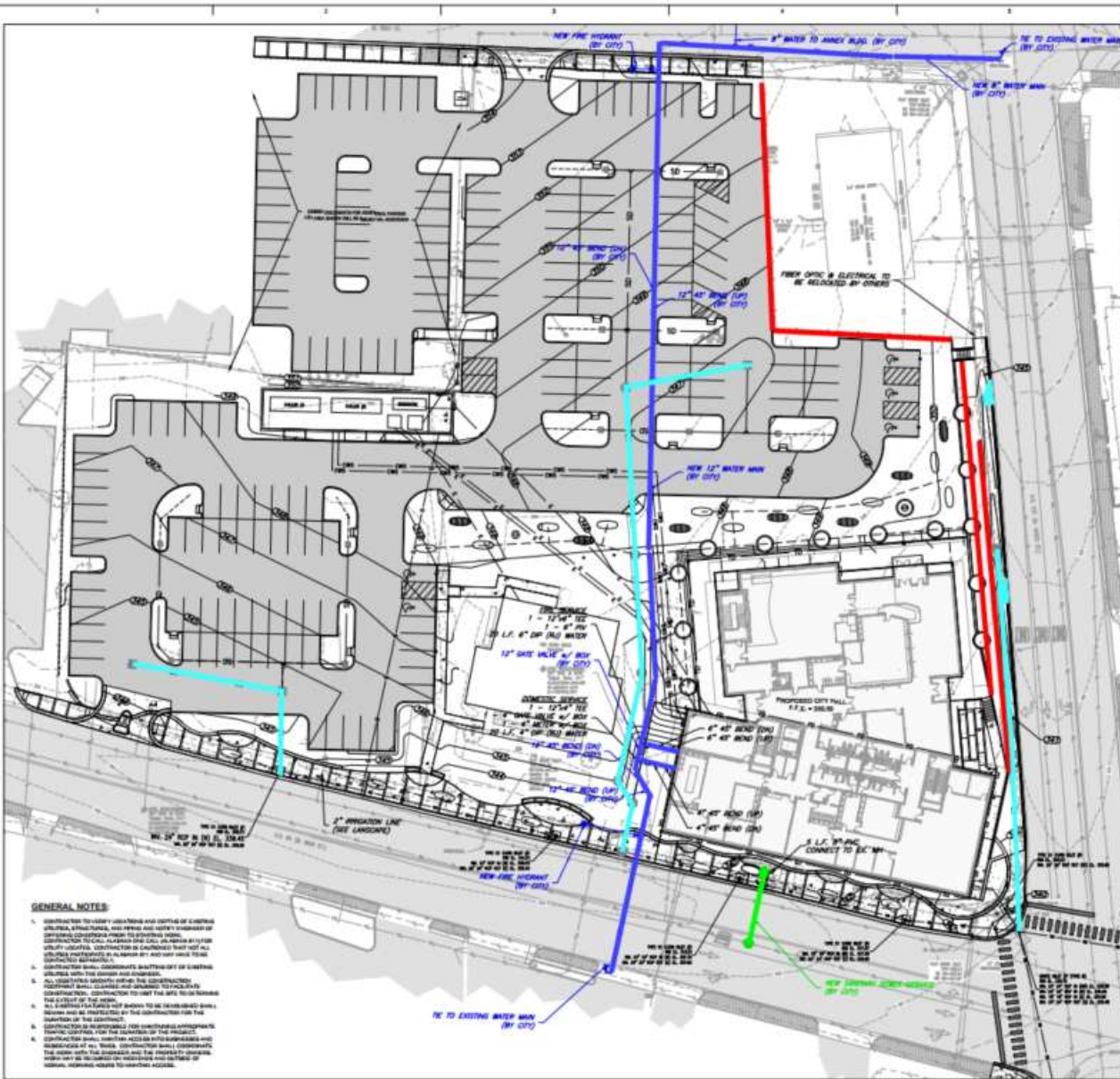
Site – City Hall



- ## DEMO
1. City to remove items in the property lines
 2. Contractor to remove items in ROW
 3. City negotiated the purchase of the various properties
 4. Courthouse parking lot relocated to expanded parking lot at Troy/Oates – completed prior to starting demo on this site



Site – City Hall



CP-1	CP-2	CP-3
12" W.P. 48'	12" W.P. 72'	12" W.P. 144'
6" POLYETH. 240'	6" POLYETH. 120'	6" POLYETH. 240'
6" POLYETH. 120'	6" POLYETH. 120'	6" POLYETH. 240'
6" POLYETH. 120'	6" POLYETH. 120'	6" POLYETH. 240'

PROPOSED LEGEND

- H WATER VALVE
- F FIRE HYDRANT
- W WATER METER
- 3 FLUX
- ⊕ CROSS
- 7 TES
- 8 BOMB
- 9 ELEV. BUT
- ⊙ SANITARY/STORM MANHOLE
- GATE VALVE
- BACK VALVE/MANIFOLD (BY CITY)
- ▭ MANIFOLD
- METER CONTOUR
- METER CONTOUR
- GROUND METER
- STORM METER
- 12" CHOP. STORM
- PERFORATED CONCRETE STORM
- FOUNDATION GRAIN
- TRENCH GRAIN
- SANITARY METER
- WATER METER
- ELECTRICAL
- CHILLED WATER
- NATURAL GAS
- ASPHALT
- CONCRETE

WATER NOTES:

1. APPROXIMATE LOCATIONS OF SHOWN WATER MAINS AND WATER VALVES, FIRE HYDRANTS, AND WATER METERS ARE SHOWN ON THIS PLAN. CONTRACTOR SHALL VERIFY THE LOCATION AND DEPTH OF ALL EXISTING UTILITY LINES PRIOR TO CONSTRUCTION. CONTRACTOR SHALL BE RESPONSIBLE FOR THE PROTECTION OF ALL EXISTING UTILITY LINES AND FOR THE REPAIR OF ANY DAMAGE TO EXISTING UTILITY LINES. CONTRACTOR SHALL BE RESPONSIBLE FOR THE PROTECTION OF ALL EXISTING UTILITY LINES AND FOR THE REPAIR OF ANY DAMAGE TO EXISTING UTILITY LINES. CONTRACTOR SHALL BE RESPONSIBLE FOR THE PROTECTION OF ALL EXISTING UTILITY LINES AND FOR THE REPAIR OF ANY DAMAGE TO EXISTING UTILITY LINES.
2. NEW WATER MAINS SHALL BE 12" POLYETHYLENE GLYCOL (PE) PIPE WITH 2" WALL THICKNESS. ALL WATER MAINS SHALL BE INSTALLED AT A MINIMUM DEPTH OF 36" BELOW FINISHED GRADE. CONTRACTOR SHALL BE RESPONSIBLE FOR THE PROTECTION OF ALL EXISTING UTILITY LINES AND FOR THE REPAIR OF ANY DAMAGE TO EXISTING UTILITY LINES.
3. WATER MAINS SHALL BE INSTALLED AT A MINIMUM DEPTH OF 36" BELOW FINISHED GRADE. CONTRACTOR SHALL BE RESPONSIBLE FOR THE PROTECTION OF ALL EXISTING UTILITY LINES AND FOR THE REPAIR OF ANY DAMAGE TO EXISTING UTILITY LINES.
4. CONTRACTOR SHALL BE RESPONSIBLE FOR THE PROTECTION OF ALL EXISTING UTILITY LINES AND FOR THE REPAIR OF ANY DAMAGE TO EXISTING UTILITY LINES.
5. CONTRACTOR SHALL BE RESPONSIBLE FOR THE PROTECTION OF ALL EXISTING UTILITY LINES AND FOR THE REPAIR OF ANY DAMAGE TO EXISTING UTILITY LINES.
6. CONTRACTOR SHALL BE RESPONSIBLE FOR THE PROTECTION OF ALL EXISTING UTILITY LINES AND FOR THE REPAIR OF ANY DAMAGE TO EXISTING UTILITY LINES.
7. CONTRACTOR SHALL BE RESPONSIBLE FOR THE PROTECTION OF ALL EXISTING UTILITY LINES AND FOR THE REPAIR OF ANY DAMAGE TO EXISTING UTILITY LINES.
8. CONTRACTOR SHALL BE RESPONSIBLE FOR THE PROTECTION OF ALL EXISTING UTILITY LINES AND FOR THE REPAIR OF ANY DAMAGE TO EXISTING UTILITY LINES.
9. CONTRACTOR SHALL BE RESPONSIBLE FOR THE PROTECTION OF ALL EXISTING UTILITY LINES AND FOR THE REPAIR OF ANY DAMAGE TO EXISTING UTILITY LINES.
10. CONTRACTOR SHALL BE RESPONSIBLE FOR THE PROTECTION OF ALL EXISTING UTILITY LINES AND FOR THE REPAIR OF ANY DAMAGE TO EXISTING UTILITY LINES.

SEWER NOTES:

1. APPROXIMATE LOCATIONS OF SHOWN SEWER MAINS AND SEWER VALVES, SANITARY MANHOLES, AND STORM MANHOLES ARE SHOWN ON THIS PLAN. CONTRACTOR SHALL VERIFY THE LOCATION AND DEPTH OF ALL EXISTING UTILITY LINES PRIOR TO CONSTRUCTION. CONTRACTOR SHALL BE RESPONSIBLE FOR THE PROTECTION OF ALL EXISTING UTILITY LINES AND FOR THE REPAIR OF ANY DAMAGE TO EXISTING UTILITY LINES.
2. NEW SEWER MAINS SHALL BE 12" POLYETHYLENE GLYCOL (PE) PIPE WITH 2" WALL THICKNESS. ALL SEWER MAINS SHALL BE INSTALLED AT A MINIMUM DEPTH OF 36" BELOW FINISHED GRADE. CONTRACTOR SHALL BE RESPONSIBLE FOR THE PROTECTION OF ALL EXISTING UTILITY LINES AND FOR THE REPAIR OF ANY DAMAGE TO EXISTING UTILITY LINES.
3. SEWER MAINS SHALL BE INSTALLED AT A MINIMUM DEPTH OF 36" BELOW FINISHED GRADE. CONTRACTOR SHALL BE RESPONSIBLE FOR THE PROTECTION OF ALL EXISTING UTILITY LINES AND FOR THE REPAIR OF ANY DAMAGE TO EXISTING UTILITY LINES.
4. CONTRACTOR SHALL BE RESPONSIBLE FOR THE PROTECTION OF ALL EXISTING UTILITY LINES AND FOR THE REPAIR OF ANY DAMAGE TO EXISTING UTILITY LINES.
5. CONTRACTOR SHALL BE RESPONSIBLE FOR THE PROTECTION OF ALL EXISTING UTILITY LINES AND FOR THE REPAIR OF ANY DAMAGE TO EXISTING UTILITY LINES.
6. CONTRACTOR SHALL BE RESPONSIBLE FOR THE PROTECTION OF ALL EXISTING UTILITY LINES AND FOR THE REPAIR OF ANY DAMAGE TO EXISTING UTILITY LINES.
7. CONTRACTOR SHALL BE RESPONSIBLE FOR THE PROTECTION OF ALL EXISTING UTILITY LINES AND FOR THE REPAIR OF ANY DAMAGE TO EXISTING UTILITY LINES.
8. CONTRACTOR SHALL BE RESPONSIBLE FOR THE PROTECTION OF ALL EXISTING UTILITY LINES AND FOR THE REPAIR OF ANY DAMAGE TO EXISTING UTILITY LINES.
9. CONTRACTOR SHALL BE RESPONSIBLE FOR THE PROTECTION OF ALL EXISTING UTILITY LINES AND FOR THE REPAIR OF ANY DAMAGE TO EXISTING UTILITY LINES.
10. CONTRACTOR SHALL BE RESPONSIBLE FOR THE PROTECTION OF ALL EXISTING UTILITY LINES AND FOR THE REPAIR OF ANY DAMAGE TO EXISTING UTILITY LINES.

GENERAL NOTES:

1. CONTRACTOR TO VERIFY CONDITIONS AND DEPTHS OF EXISTING UTILITY LINES, AND VERIFY AND VERIFY'S LOCATION OF EXISTING UTILITY LINES PRIOR TO CONSTRUCTION. CONTRACTOR SHALL BE RESPONSIBLE FOR THE PROTECTION OF ALL EXISTING UTILITY LINES AND FOR THE REPAIR OF ANY DAMAGE TO EXISTING UTILITY LINES.
2. CONTRACTOR SHALL BE RESPONSIBLE FOR THE PROTECTION OF ALL EXISTING UTILITY LINES AND FOR THE REPAIR OF ANY DAMAGE TO EXISTING UTILITY LINES.
3. CONTRACTOR SHALL BE RESPONSIBLE FOR THE PROTECTION OF ALL EXISTING UTILITY LINES AND FOR THE REPAIR OF ANY DAMAGE TO EXISTING UTILITY LINES.
4. CONTRACTOR SHALL BE RESPONSIBLE FOR THE PROTECTION OF ALL EXISTING UTILITY LINES AND FOR THE REPAIR OF ANY DAMAGE TO EXISTING UTILITY LINES.
5. CONTRACTOR SHALL BE RESPONSIBLE FOR THE PROTECTION OF ALL EXISTING UTILITY LINES AND FOR THE REPAIR OF ANY DAMAGE TO EXISTING UTILITY LINES.
6. CONTRACTOR SHALL BE RESPONSIBLE FOR THE PROTECTION OF ALL EXISTING UTILITY LINES AND FOR THE REPAIR OF ANY DAMAGE TO EXISTING UTILITY LINES.
7. CONTRACTOR SHALL BE RESPONSIBLE FOR THE PROTECTION OF ALL EXISTING UTILITY LINES AND FOR THE REPAIR OF ANY DAMAGE TO EXISTING UTILITY LINES.
8. CONTRACTOR SHALL BE RESPONSIBLE FOR THE PROTECTION OF ALL EXISTING UTILITY LINES AND FOR THE REPAIR OF ANY DAMAGE TO EXISTING UTILITY LINES.
9. CONTRACTOR SHALL BE RESPONSIBLE FOR THE PROTECTION OF ALL EXISTING UTILITY LINES AND FOR THE REPAIR OF ANY DAMAGE TO EXISTING UTILITY LINES.
10. CONTRACTOR SHALL BE RESPONSIBLE FOR THE PROTECTION OF ALL EXISTING UTILITY LINES AND FOR THE REPAIR OF ANY DAMAGE TO EXISTING UTILITY LINES.

CONSTRUCTION DOCUMENTS

RDG

CITY OF DOTHAN - CITY OFFICE RELOCATION

CITY HALL
150 MAIN ST
DOTHAN, AL 36001

CITY OF DOTHAN

UTILITY PLAN

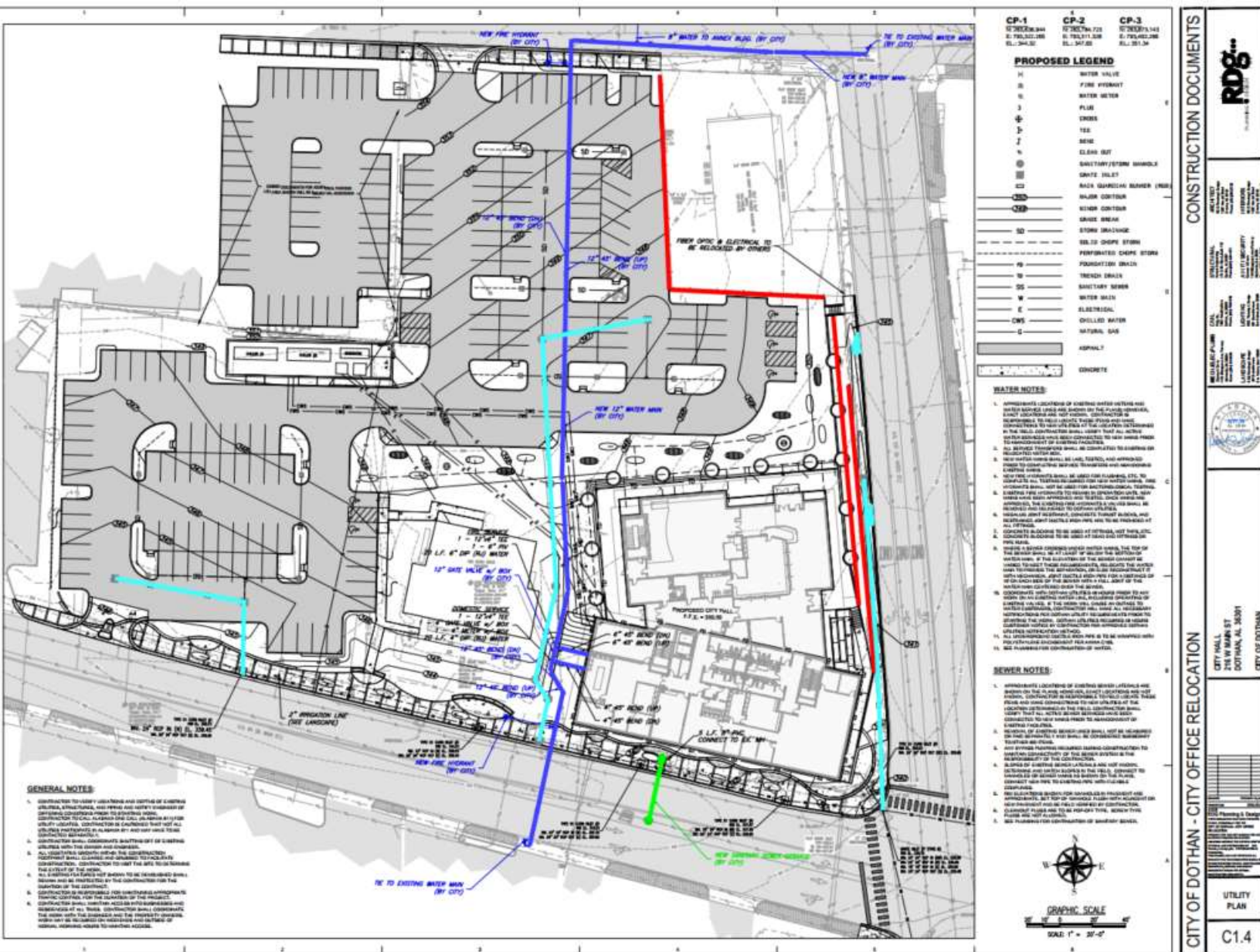
C1.4

GRAPHIC SCALE
 SCALE: 1" = 30'-0"

1. Slope of road and site along Oates St. influenced grading plan
2. Retaining walls
3. Water/sewer service by City
4. Drainage from both parking lots ties to new storm at Main
5. Bioretention cells in parking islands for LID
6. Curb inlets and grass swale along Oates (improve quantity/quality)
7. Foundation drain at basement level
8. Trench drain around steps at N & W side of front of bldg.
9. Planter drainage system
10. Replace traffic signal at Oates/Main
11. New curb ramps at Oates/Main



Site – City Hall



1. Slope of road and site along Oates St. influenced grading plan
2. Retaining walls
3. Water/sewer service by City
4. Drainage from both parking lots ties to new storm at Main
5. Bioretention cells in parking islands for LID
6. Curb inlets and grass swale along Oates (improve quantity/quality)
7. Foundation drain at basement level
8. Trench drain around steps at N & W side of front of bldg.
9. Planter drainage system
10. Replace traffic signal at Oates/Main
11. New curb ramps at Oates/Main



CONSTRUCTION DOCUMENTS

RDG

CITY OF DOTHAN - CITY OFFICE RELOCATION

UTILITY PLAN

C1.4



QUESTIONS?



WWW.DOTHAN.ORG



KSANDERS@POLY-INC.COM