

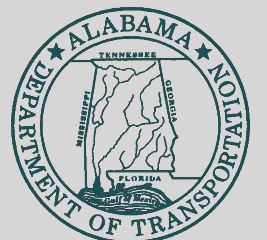
ROSS CLARK CIRCLE IMPROVEMENTS

ASCE ALABAMA SECTION WINTER MEETING

MARCH 20, 2025

PRESENTED BY: CHRISTOPHER E. HUNER, P.E.

ALDOT - TROY AREA OPERATIONS ENGINEER



HISTORY OF ROSS CLARK CIRCLE

- ▶ The Ross Clark Circle (SR-210) is a 13.77-mile loop around Dothan, Alabama
- ▶ Has given Dothan the moniker “Circle City”
- ▶ Construction began in 1956
- ▶ Completed in 1958
- ▶ Connects several major routes in southeast Alabama including:
 - ▶ US-231
 - ▶ US-431
 - ▶ US-84
 - ▶ SR-52

INTERESTING FACTS RELATED TO THE ROSS CLARK CIRCLE

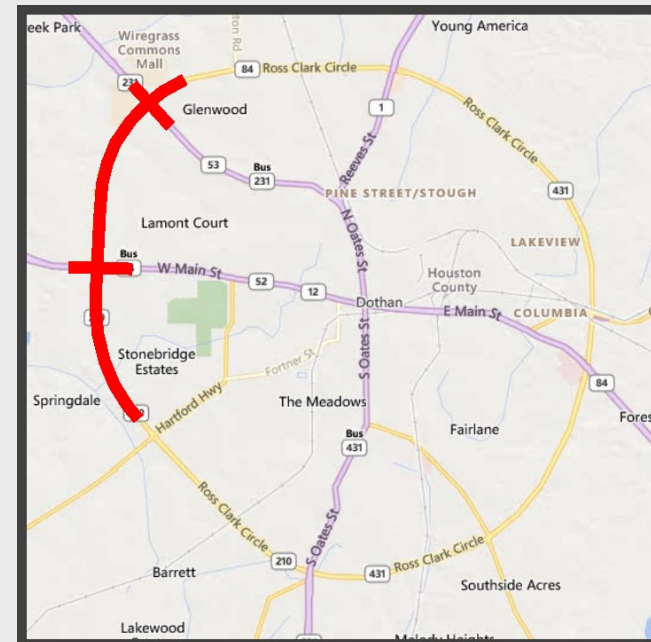
- ▶ ALDOT placed its first Stone Matrix Asphalt (SMA) on the RCC in 1999
- ▶ ALDOT completed its first Bridge Slide project on the RCC in 2016
- ▶ The west side of the RCC received the prestigious “NAPA Perpetual Pavement Award” in 2019.

ALDOT'S GOALS FOR THE "CORRIDOR"

- ▶ Corridor: Ross Clark Circle from US-231 South to US-231 North (west side of RCC)
 - ▶ Increase Capacity
 - ▶ Improve Access Management
 - ▶ Upgrade Signals and Signal Coordination
 - ▶ Upgrade Pedestrian Facilities
 - ▶ Add Roadway Lighting

PROJECT TOO EXPENSIVE

- ▶ Original letting - Winter of 2018
 - ▶ Only one bidder
 - ▶ 2 contractors entered one bid package
 - ▶ Over \$60 million (bracket was \$40 million)
- ▶ Bid rejected - Project broken into phases

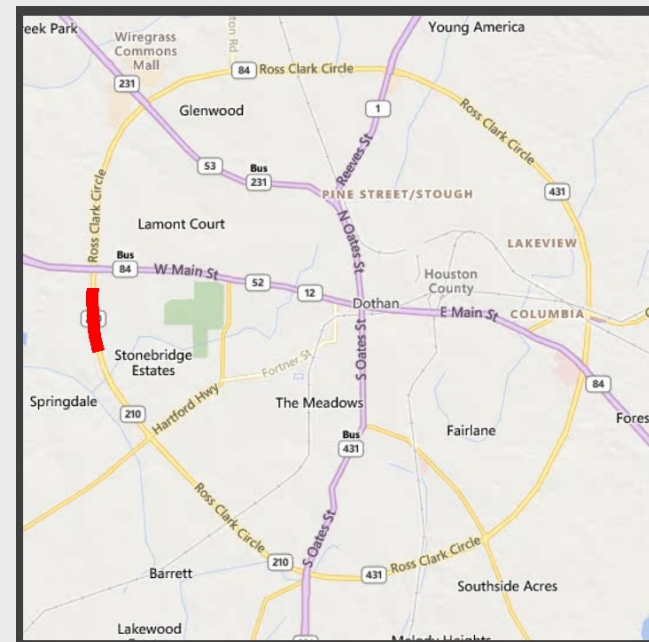


DECISION TO PHASE WORK

- ▶ Phasing schemes analyzed between 2 phases up to 6 phases
- ▶ Decision to go with 4 phases
 - ▶ Phase 1: Bauman Drive to South of US-84
 - ▶ Phase 2: South of US-84 to South of Meadowbrook Drive and US-84 work
 - ▶ Phase 3: South of Meadowbrook Drive to North Cherokee Avenue and US-231 work
 - ▶ Phase 4: Pedestrian Bridge and Sidewalks

PHASE 1 LETTING DATE: 1/25/2019

- ▶ Bauman Drive to South of US-84
- ▶ Contract Bid: \$4,732,225.28



NOTABLE DESIGN FEATURE

- ▶ Bridge Slide
- ▶ FHWA Everyday Counts
- ▶ ABC – Accelerated Bridge Construction



PROJECT: NHF-BRF-0210 (506)

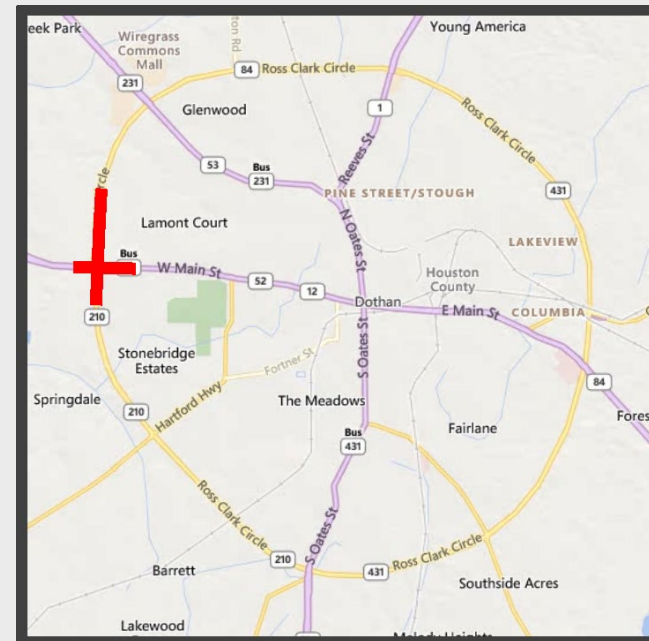
HOUSTON COUNTY

PHASE 2

LETTING DATE:

9/27/2019

- ▶ South of US-84 to South of Meadowbrook Drive and US-84 work
- ▶ Contract Bid: \$16,193,632.75
 - ▶ \$20,925,858.03 (combined)



NOTABLE DESIGN FEATURE

- ▶ Triple Left Turn from RCC to WB US-84

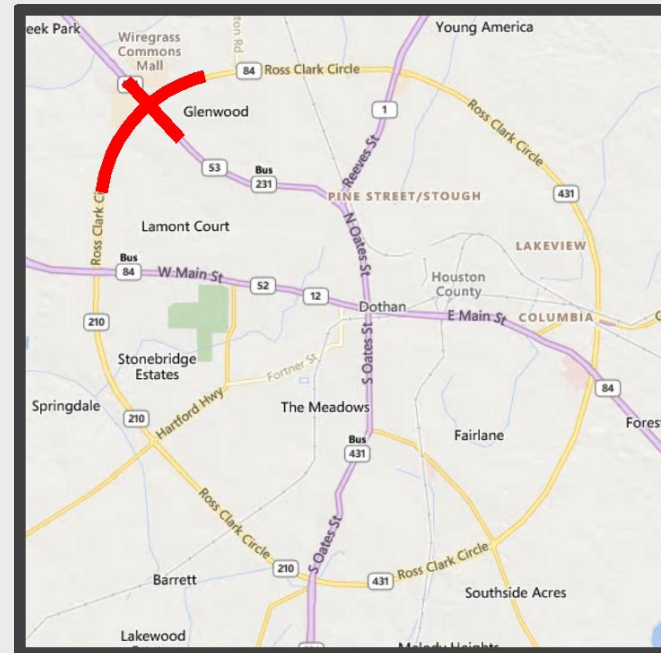


PHASE 3

LETTING DATE:

3/25/2022

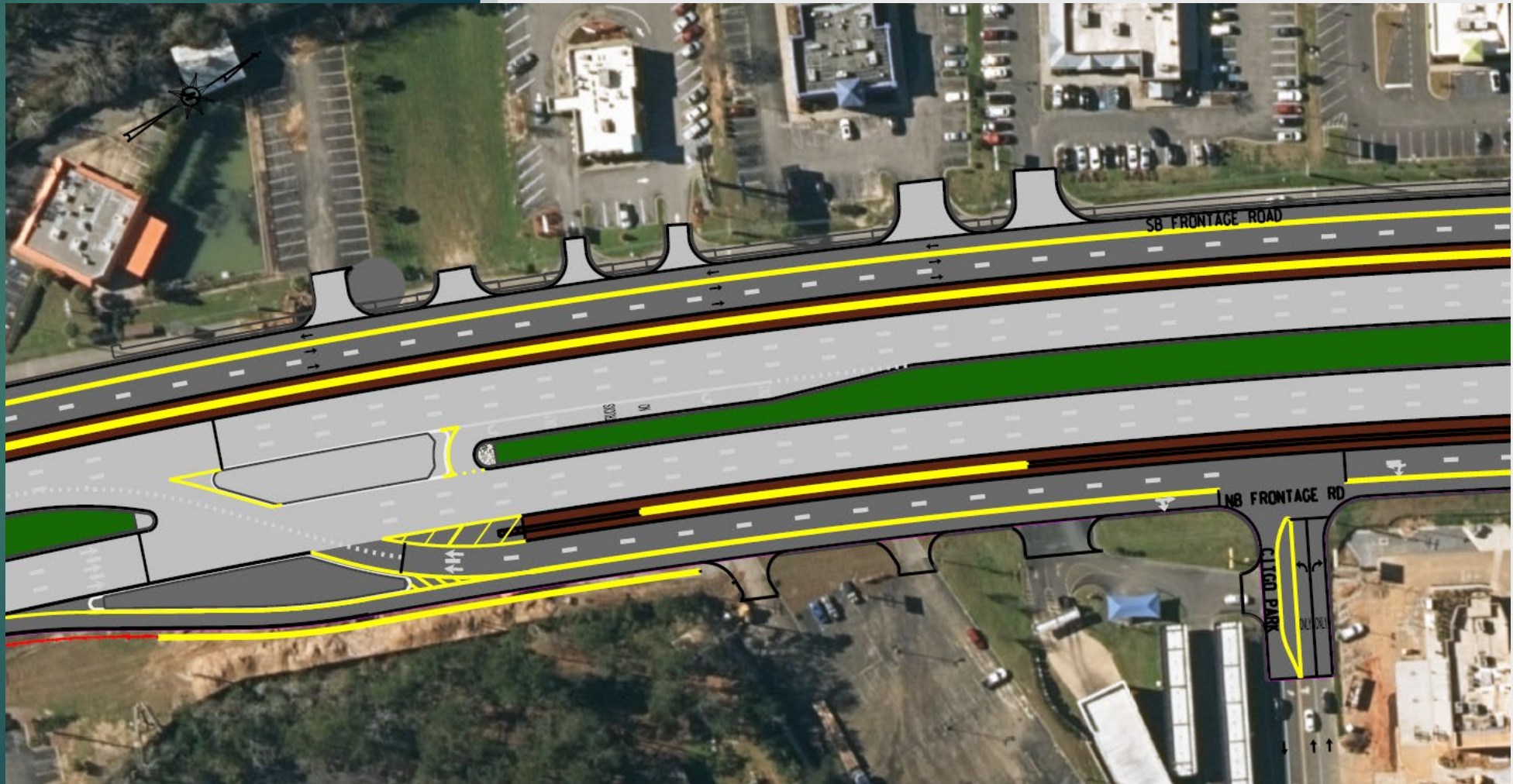
- ▶ South of Meadowbrook Drive to North Cherokee Avenue and US-231 work
- ▶ Contract Bid: \$42,472,427.43
 - ▶ 63,398,285.46 (combined)



FRONTAGE ROADS (VIEW 1)



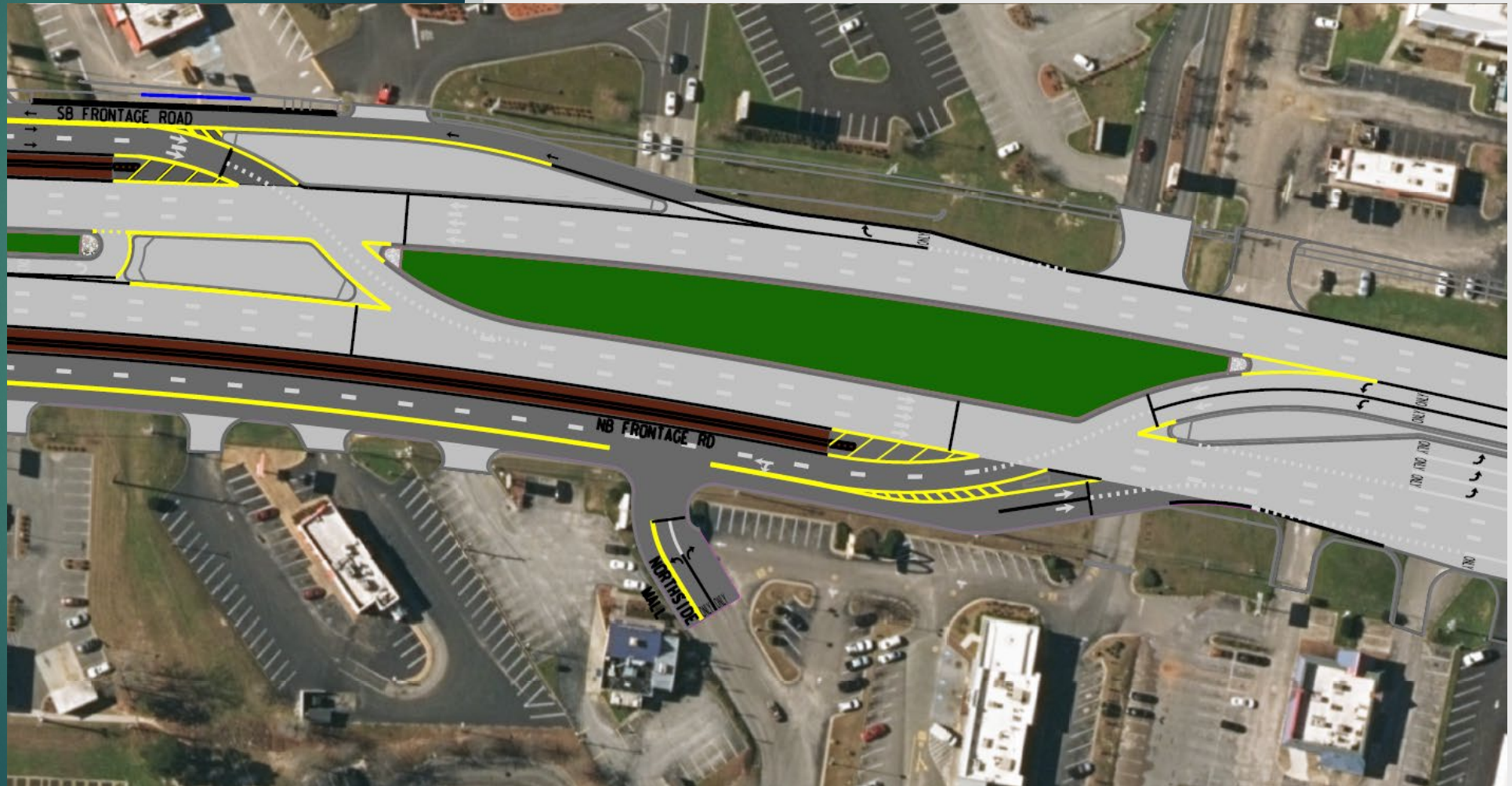
Frontage Roads (View 2)



Frontage Roads (View 3)



FRONTAGE ROADS (VIEW 4)

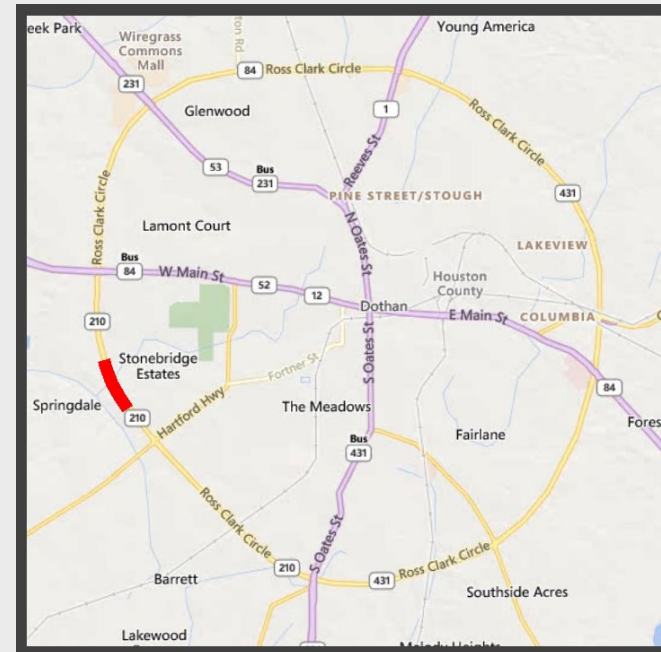


PHASE 3 – US 84 W TO US 231 N



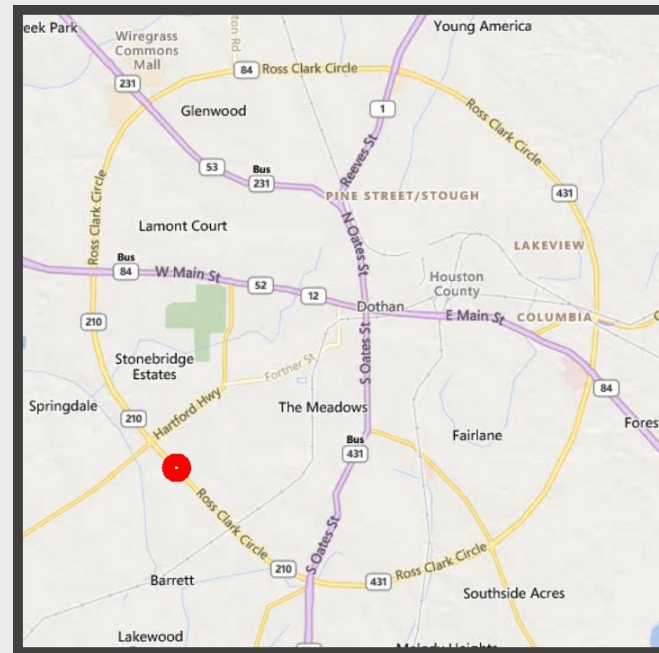
PHASE 4 PROPOSED LETTING DATE: 11/07/2025

- ▶ Pedestrian Bridge and Sidewalks
 - ▶ Lighting Addressed with assistance from City of Dothan in first 3 Phases.
- ▶ Estimated Cost: \$4.0 million
 - ▶ \$67,398,285.46 (combined estimate)



INTERSECTION PROJECTS COMPLETED: TIMBERS DRIVE

- ▶ Let to Contract July 29, 2022
- ▶ Project included R-Cuts and U-turn bulbs
- ▶ Project Completed October 2023



LAYOUT DRAWING

- ▶ Timbers Drive – Access Management
- ▶ HSIP Project



ACTIVE INTERSECTION PROJECTS:

US-231 SOUTH & SR-210

- ▶ NH-0001(629)
- ▶ Intersection of SR-1 (US-231) and SR-210
- ▶ Let to Contract February 23, 2024
 - ▶ Widening for future 6 lanes on RCC
 - ▶ Signal Upgrades
- ▶ Estimated Completion – June 2025

FUTURE ROSS CLARK CIRCLE PROJECTS ALONG THE CORRIDOR

- ▶ Intersection Modification and Access Management on SR-210 from SR-52 to Fortner Street
- ▶ Intersection Improvements on SR-210 at Park Street
- ▶ Additional Lanes on SR-210 from US-231 South to Bauman Drive

OTHER
PROJECTS
PLANNED FOR
ROSS CLARK
CIRCLE

- ▶ Access Management on SR-210 from Kelley Drive to Medical Park Boulevard (US-84 E intersection)
- ▶ Installation of ITS devices on SR-210 in Dothan

FUTURE – EAST SIDE – US 84 E TO SR-52 E

Kelley Drive



PHASE 3 PROJECT OVERVIEW

- Contractor - Midsouth Paving
- Contract Amount – \$42.5 Million
- Contract Time – 550 Working Days
- Work Began – 7/2022
- Percent Complete – 85%
- Percent Time Charged – 75%
- Estimated Completion Date – 9/2025



PROJECT SCOPE



Grade, Base, Pave

- Widening RCC and Montgomery Hwy from 4 Lanes to 6 Lanes
- Addition of new 3 lane frontage roads

Drainage

- 24,000 LF (4.5 mi) of Pipe
- 3 Culvert Extensions
- 329 Inlets

Retaining Walls

- 3 Retaining Walls
- Total length of 2219 LF

Signals & Lighting

- 11 New Signals
- 75 Roadway Lighting Assemblies

Incidentals

- New sidewalk and pedestrian improvements
- Concrete Barrier Rail
- Curb & Gutter, Slope Paving, Etc

KEY ITEMS OF WORK

- Retaining Walls
- Frontage Roads
- Widening
- Drainage



RETAINING WALLS

- Soldier pile with lagging



Retaining Walls

- Wall heights between 8 ft – 12 ft



Retaining Walls

- Construction took approximately 6 months



Retaining Walls

- Safety Barriers atop retaining walls



Frontage Roads

3 lanes both northbound and
southbound side



Frontage Roads

Signalized Slip Lanes



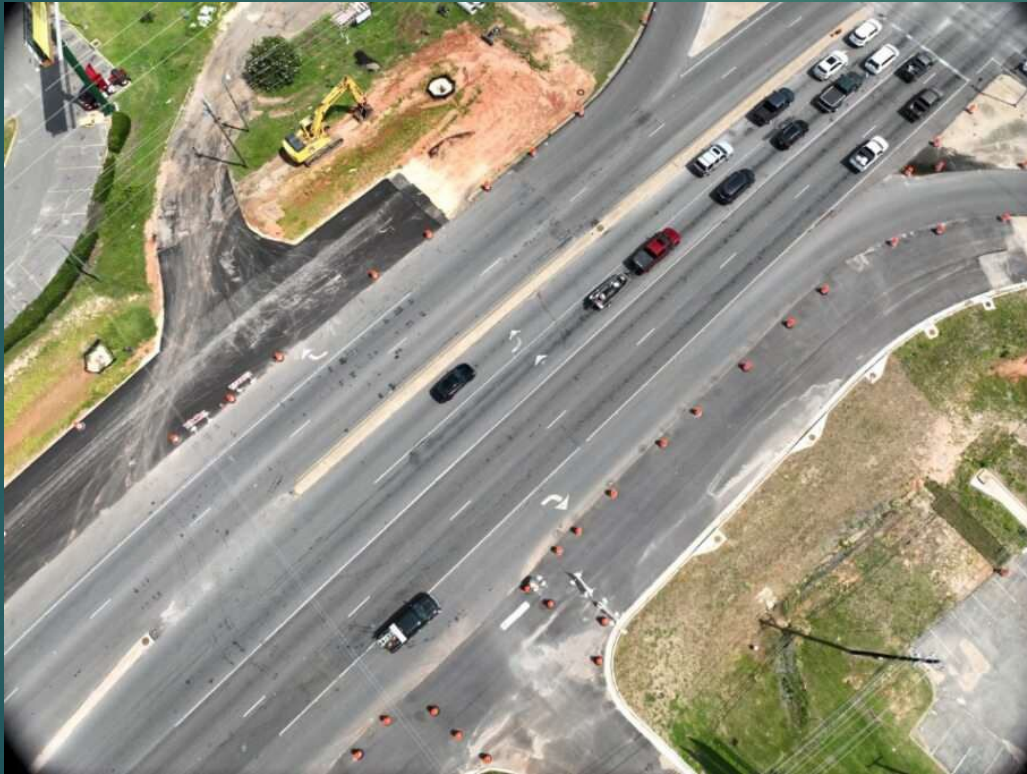
Frontage Roads

Access to retail and dining



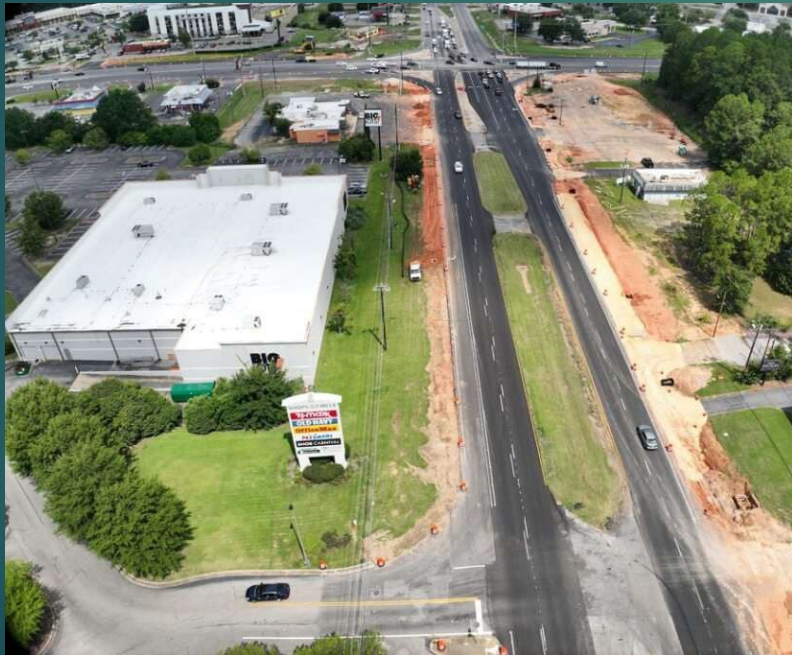
Widening

Expand from 4 to 6 lanes



Widening

Concept: connect existing right turn lanes to achieve 3 lanes each direction



Drainage

Culvert Extensions

Storm sewer pipe

Roadway pipe

Sidedrain pipe



Drainage

Armored slopes



PUBLIC IMPACT



Adjusted construction sequencing to allow existing signalized intersections to remain operational for longer.



Weekly meetings with the City of Dothan, Thompson Engineering, ALDOT, and Contractor to discuss upcoming impacts to the public.



Implemented the use of message boards to direct traffic to new access points and forewarn motorists of traffic pattern changes



Held quarterly stakeholder meetings with local businesses to hear feedback and concerns.

PROJECT COORDINATION

- Utility Conflicts
- Temporary Traffic Control
- City of Dothan provided temporary signal poles at the intersection of the circle and Sams/Chic-fil-a



ACKNOWLEDGEMENTS

ALDOT – AARON WHITE

THOMPSON ENGINEERING – LUKE PETERS

MCINNIS CONSTRUCTION, LLC

KIMLEY-HORN

ATKINS



THANK YOU!

- ▶ Questions?
- ▶ Contact Information:
 - ▶ Christopher Huner, P.E.
Operations Engineer
299 Elba Highway
Troy, Alabama 36081
hunerc@dot.state.al.us
334-670-2420

